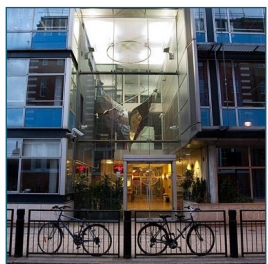
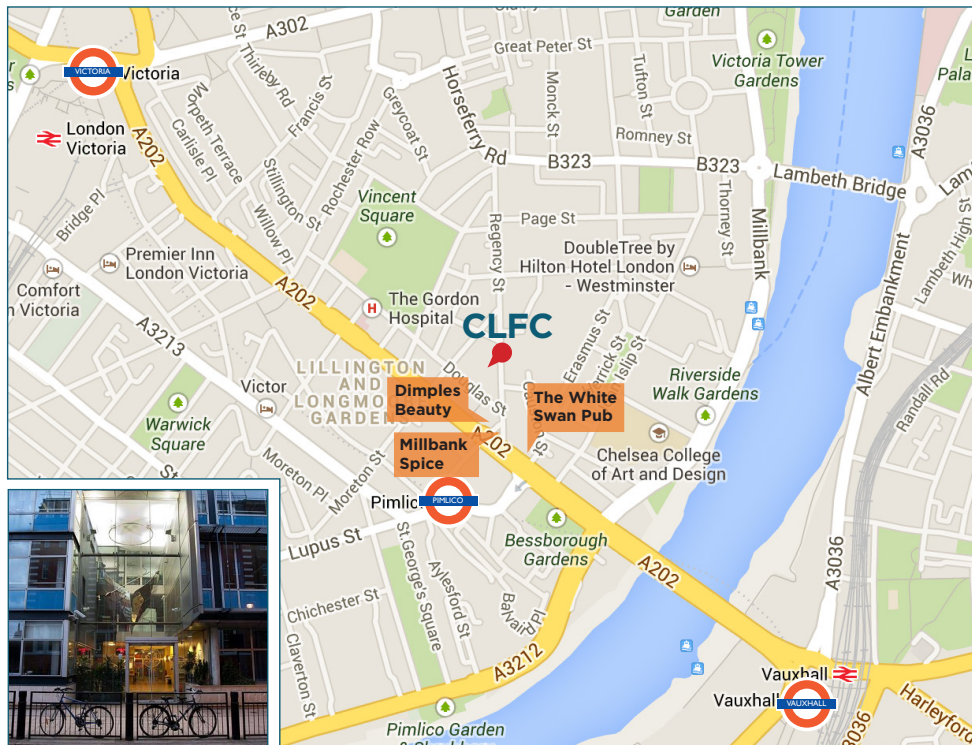


HOW TO FIND US

Greycoat Hospital School, 97-98 Regency Street,
London, SW1P 4GH



BY TUBE

Pimlico (5-7 min walk)
Victoria (10-15 min walk)
Vauxhall (10-15 min walk)

BY TRAIN

Victoria or Vauxhall

BY BUS

2, 24, 36, 87, 88, 185, 360, 436

BY RIVER BOAT

Millbank Pier (Pimlico)
St George's Wharf (Vauxhall)
www.thamesclippers.com

BY CAR

There is limited street parking in the area.
This venue is within the congestion
charge zone.

TRANSPORT FOR LONDON

www.tfl.gov.uk or 0343 222 1234

NATIONAL RAIL ENQUIRIES

08457 48 49 50
www.nationalrail.co.uk

FROM VICTORIA TRAIN/TUBE

Exit the station via the Overground railway terminus. Take the large exit, close to Platform 2, towards the Apollo Victoria Theatre, and turn right onto Wilton Road. Cross over the traffic lights, and keep walking straight. You should be able to see the 'Park Plaza' Hotel on your left. Take the next left onto Gillingham Street. At the junction, turn right onto Vauxhall Bridge Road, crossing to the left-hand side. Walk straight ahead (passing the 'Queen Mother sports Centre' on your right, and the 'Jugged Hare' pub on your left). Keep walking until you reach 'Dimples Beauty' on the left. Take the next left onto Regency Street. Walk straight and you can see the school venue on the left-hand side.

FROM VAUXHALL TRAIN/TUBE

Exit the station in the direction of Vauxhall Bus Station. Cross over the road, towards the bus station, and locate Bus Stop A. From this stop, keep walking, onto Vauxhall Bridge itself. Cross over the bridge, keeping on the right-hand side of the road. Once over the bridge, keep walking straight for 3-4 minutes until you reach 'The White Swan' pub on your right-hand side. Take the next right-hand side street, turning into Regency Street. Walk straight and you can see the school venue on the left-hand side.

FROM PIMLICO TUBE

Walk up a few steps straight ahead, taking the exit up a left-hand ramp, signposted for TATE BRITAIN. On exiting the station, keep walking straight along Bessborough Street, until you reach traffic lights intersecting with Vauxhall Bridge Road. You should be able to see 'The White Swan' pub opposite you. Cross over the road and turn left onto Vauxhall Bridge Road. Take the next right, turning into Regency Street. Walk straight for a minute or so, and you can see the school venue on the left-hand side.